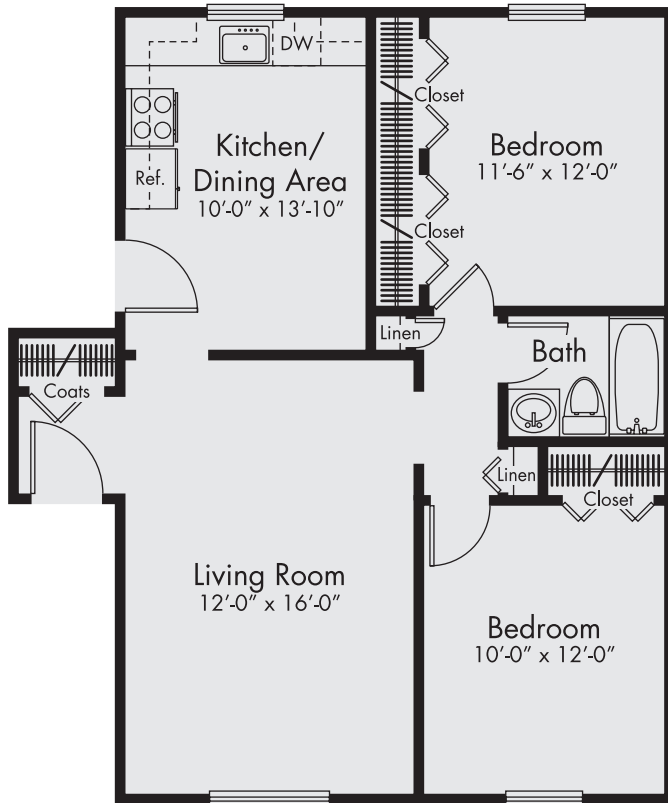


Oakland Mall

APARTMENTS



THE CARROLTON

2 Bedrooms // 1 Bath // Approx. 755 sf

The entry foyer provides immediate access to the spacious living room with its wall of windows, flooding the living area with natural light. The large living and adjoining dining room provide for flexible furniture arrangements. The step-saving galley kitchen includes all appliances. The bedrooms include large closets and well-placed windows for natural light and easy access to the central bath and linen closet. The spacious bedroom suite includes an oversized walk-in closet.

365 East Edmund Avenue // Madison Heights, Michigan 48071 // 248.588.5558 // OaklandMall@maill.com // OaklandMallApts.com

We reserve the right to modify features, price, specifications and/or to change or discontinue models without notice or obligation. Floor plan dimensions are approximate. All information provided herein is subject to change at ownership's sole discretion. 022618

